



MRT

MEDICAL DEVICE MANUFACTURER

ENDOSCOPIC EPIDUROLYSIS

innovative and complete system

Tools catalogue and operating technique

Resascope

Videoguide catheter for flexible optic



NEW COMPLETE AND INNOVATIVE ENDOSCOPIC EPIDUROLYSIS SYSTEM

Resascope is a videoguided catheter which uses flexible optical fibres to explore and operate in the **epidural space**.

The **Resascope** system, along with all its components, has been devised for a percutaneous and mini-invasive approach to the rachidian channel and for viewing the epidural space directly.

In addition to this, the system uses dedicated surgical tools for carrying out operations on pathological structures in the epidural space.

It is a complete system for carrying out diagnoses and surgical procedures in the epidural space.

The Resascope device is intended to be used by neurosurgeons, pain therapists, orthopaedists, neuroradiologists who are experienced in spinal pathologies.

- Precise and accurate navigation
- Low rotation of the handle
- Flexion fluid tip in any direction
- Contemporary movement in two axes



Better instruments disposition

Simultaneous insertion of multiple instruments in the video guide, with the possibility to insert two tubes for each instrument such Resaloon, Resaflex, grasper, etc.

More easily view recovery of the previously explored area.

Risk reduction of instrumentations' contamination.

Resaloon Balloon catheter

The tool Resaloon allows the relaxation of the stenotic space and debridement of fibrous.

The use of Resaloon allows greater opening of the virtual channel with improved view and conservation of liquids.

Designed and certified instrument for use in the epidural space.



Resaflex

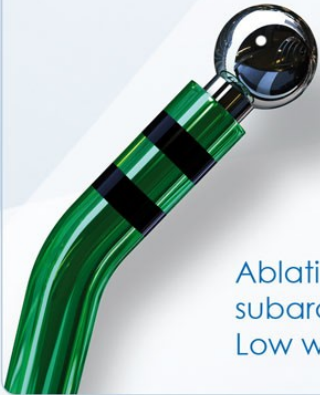
Flexible probe for epidurolysis

Flexible terminal adjusted for ablation of cicatricial epidural, subdural, subarachnoid tissues with molecular quantum radiofrequency.

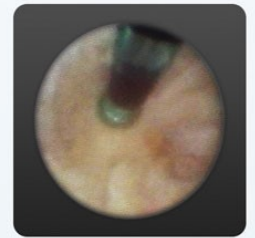
The terminal is a component of the Resascope system and is introduced into the videoguide through the operating channel, it is placed within the field of vision, moved and rotated in order to reach the pathological target tissue to be removed.

Technical characteristics:

- steel ball tip of diameter 0.80 mm, working depth 1 mm beyond the tip and depth indicator
- 645mm stem with plastic insulation
- extra-flexible silicone wire
- push-pull quick insertion connector



Ablation of the Epidural Scar tissue, subdural, subarachnoid with "Cold Quantic Radiofrequency".
Low working temperature below 50° C



Molecular Resonance Generator

Quantum molecular radiofrequency energy with less heat dispersion.



High-resolution flexible optical fiber



The flexible high-resolution optic is provided with standard or zoom ocular for better view. The ocular is separated from the optical fiber, so that sterilization is necessary only for the flexible optic.

In order to complete epidurolysis endoscopic system's functionality it has been added to Resascope a special valve with greater mechanical seal on the optical fiber, preventing slippage during normal operating procedure.



**ANTI-SLIPPAGE
SPECIAL VALVE**
greater mechanical seal
of the optical fiber

Epidurolysis with R-R Tecnic Resaflex

Endoscopic epidurolysis by Raffaeli technique with Resaloon and lysis of cicatrizial tissue through radiofrequency Resaflex

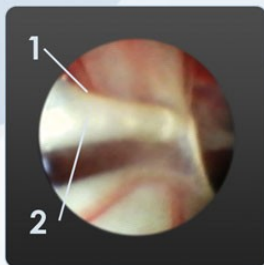


Published in Pain Clinic and Acta Neurochir (2004) Suppl 92

Surgical radio-frequency epiduroscopy technique (R-Resablator) and FBSS treatment: preliminary study.

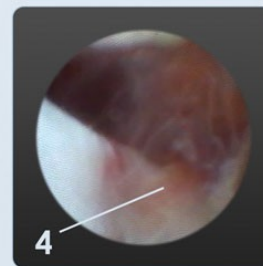
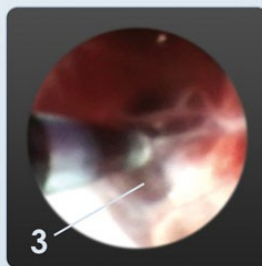
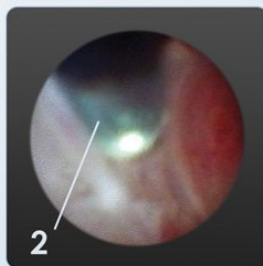
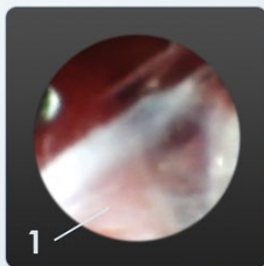
W. Raffaeli and D. Righetti U.O of pain therapy and palliative care, Hospital Infermi, Rimini, Italy

First stage: Surgical field preparation

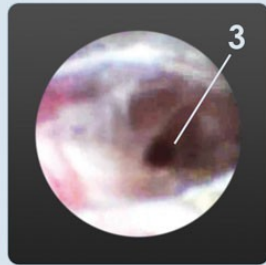


- 1 - Septum of fibrosys
- 2 - Resaloon to preparing the virtual space

Second stage: lysis of pathologic adherences

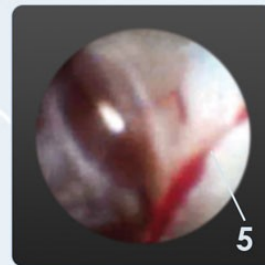
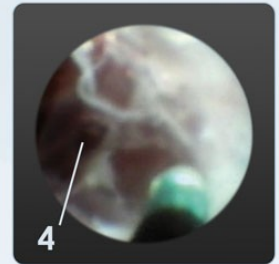
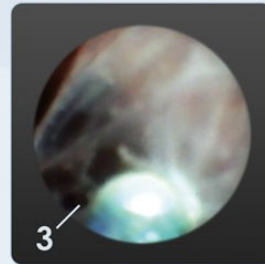
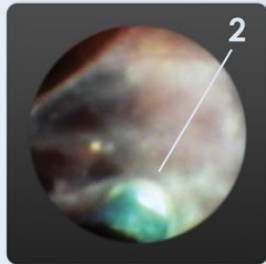


- 1 - Channel occlusion by fibrotic septum
- 2 - Operative tip of Resaflex
- 3 - Ablation phase of pathologic tissue
- 4 - Nerve root vision after ablation



- 1 - Channel occlusion by fibrotic wall
- 2 - Operative tip of Resaflex
- 3 - Partial lysis of fibrosys

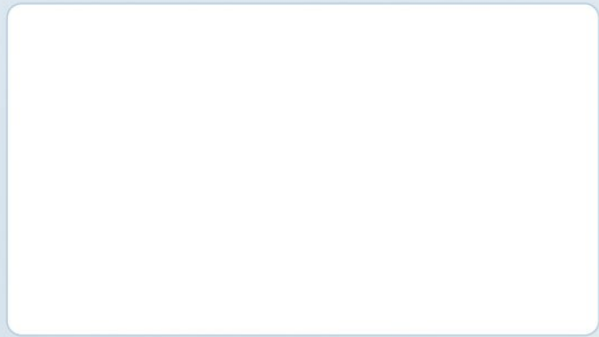
Lysis of trasversal fibrotic tissue



- 1 - Channel occlusion of fibrotic tissue
- 2 - Operative tip of Resaflex
- 3 - Ablation phases of pathologic tissue
- 4 - Phase of lysis, enlargement and opening of the channel
- 5 - Vision of dural surface



Certified company and approved by IMQ system quality



MRT S.r.l

Via Roma, 59 int. 5
35040 Boara Pisani (PD)
P. Iva & C.F. 04214730287

Telephon: (+39) 0425 485 648
E-Mail: info@mrt-technology.com

www.mrt-technology.com